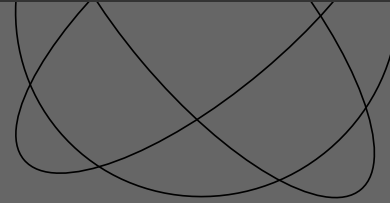


**netvoyager CE-1010**

User Guide



## Warning

The Netvoyager CE-1010 has been made to pass all relevant EU safety standards. If you have any doubts about installation or operation visit our website:

[www.netvoyager.co.uk/support](http://www.netvoyager.co.uk/support)

### Safety Precautions

Contact with AC electrical mains can cause a severe electric shock and could be lethal.

- 1) Never remove the top cover from the Netvoyager CE-1010 thin client. There are no user-serviceable parts inside it, but there are some high-voltage live parts.
- 2) Follow the set-up instructions in this manual to make sure all electrical connections are made properly.
- 3) Do not connect any equipment to the mains supply until you have properly connected all the other leads.
- 4) Disconnect the CE-1010's mains plug from the mains socket before disconnecting any equipment from its rear panel.
- 5) Never push anything into holes, slots or other openings in the CE-1010 unless specifically detailed in this document.
- 6) The CE-1010 has been designed with ease of use in mind.

## Important notice

You must read and agree to the License Agreement and conditions of use before you commence using the product. If you do not agree, you must return the whole package to the point of purchase.

### Disclaimer

This document is being supplied to you solely for information purposes and may not be reproduced or distributed to any other person or parties in whole or in part for any purpose. This document is subject to change without notice.

Should you experience any difficulties, please contact us by e-mail at [support@netvoyager.co.uk](mailto:support@netvoyager.co.uk), or phone our call centre on **+44 (0) 20 8968 3030**.

### Caution

- 1) Do not unplug the CE-1010 whilst in use.
- 2) Do not use or store the CE-1010 in hot, cold, damp or dusty places as this could affect the unit's performance and may prove to be a fire hazard.
- 3) Do not block the ventilation holes of the unit.
- 4) Never stand the unit directly on soft furnishing or carpets, as this will stop the CE-1010 getting the required ventilation.
- 5) Do not put anything on the CE-1010 that might spill (e.g. drinks, plants, etc).
- 6) Do not place the unit in an unventilated cabinet or on top of a unit which emits heat (e.g. video recorder).
- 7) Do not stack units on top of the CE-1010. Always leave a gap of at least 5cm above and around it to allow for sufficient ventilation and passage of air.
- 8) Never remove the box's metal cover or plastic front.
- 9) A service should be carried out only by an authorised Netvoyager service centre or Netvoyager authorised engineer.

### COPYRIGHT AND TRADEMARK NOTICES:

Copyright © 1999 - 2001 Netvoyager PLC and/or its suppliers. All rights reserved.

TRADEMARKS. Netvoyager and/or other Netvoyager products and services referenced herein are either trademarks or registered trademarks of Netvoyager PLC. The names of actual companies and products mentioned herein may be the trademarks of their respective owners. All trademarks respected.

## Contents

Netvoyager limited warranty .....	3
Installation and ventilation advice .....	4
Plugging in and connecting the CE-1010 .....	5
The connections page .....	6
The configure page .....	7
Microsoft End User License Agreement .....	8
Netvoyager conditions of use .....	9

## Netvoyager limited warranty

### Returns within 12 months of Purchase

- The customer may return the CE-1010 thin client if the product develops a fault within 12 months from the date of purchase.
- If a fault develops, the customer must call our customer support team on 020 8968 3030 and log the fault. The support agent determines the fault and endeavours to find a solution over the telephone.
- Faults that warrant a return are hardware failure and not operational issues which are related to usage of the system.
- If the fault cannot be remedied over the telephone, our customer services agent will arrange for the unit to be returned for repair.
- The return can only take place if an RMA code is issued. Our customer services agent or your supplier will issue an RMA code once the unit's serial number, model, contact details, pick-up details and the nature of the fault have been recorded. A confirmation can be sent to you at your request by post, fax or email.
- A return is not authorised unless an RMA code is allocated by our service centre engineer. The product will not be accepted by our service team if it does not have an RMA code
- An RMA code expires within 14 days. If you do not return the unit within 14 days, the package is deemed to be non-faulty and a new

RMA number will not be allocated to the same serial number and postal address.

- When returning the CE-1010 thin client, the Netvoyager returns team will only accept the package if it is returned with the invoice, original packaging and all the internal contents.
- There is a returns charge that covers the pickup by our authorised couriers, which is paid in advance.
- A repaired unit will be dispatched to you within 20 working days after our receipt of the package.

### The following are not covered by the Netvoyager warranty.

Loss or damage caused by misuse or neglect. Improper use, this includes any use other than the unit's ordinary commercial or industrial applications.

Loss or damage caused by shipping, improper installation or maintenance.

Failure to adhere to all the warning and caution notices contained within the CE-1010 user manual, not limited to proper environment and ventilation.

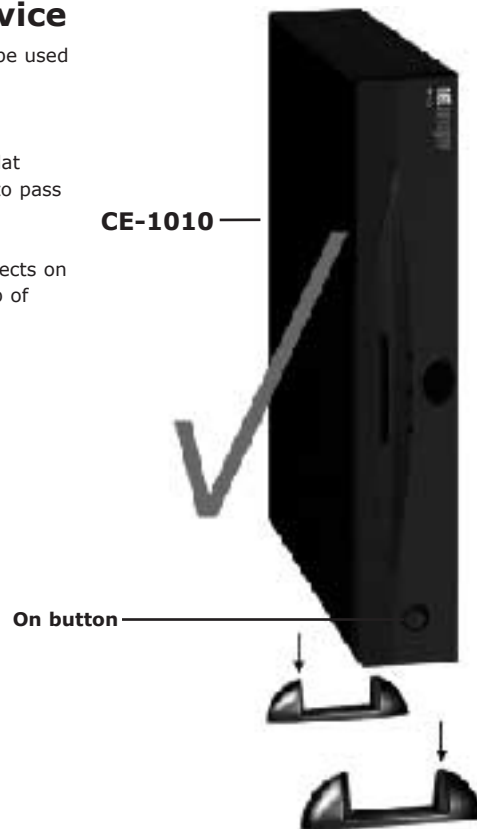
Any modification or alteration of the unit not conducted by an authorised Netvoyager service centre or engineer.

## Important installation advice

For optimum performance, the CE-1010 should be used in conjunction with the feet provided and stood vertically. This will ensure proper ventilation.

The unit can also be installed horizontally on a flat surface. In this case, ensure that air is allowed to pass freely into the ventilation holes.

Do not block the ventilation holes by placing objects on top of the unit. Do not place the CE-1010 on top of another heat generating device.



## Ensure proper ventilation

Do not stack the CE-1010 units (see diagram).

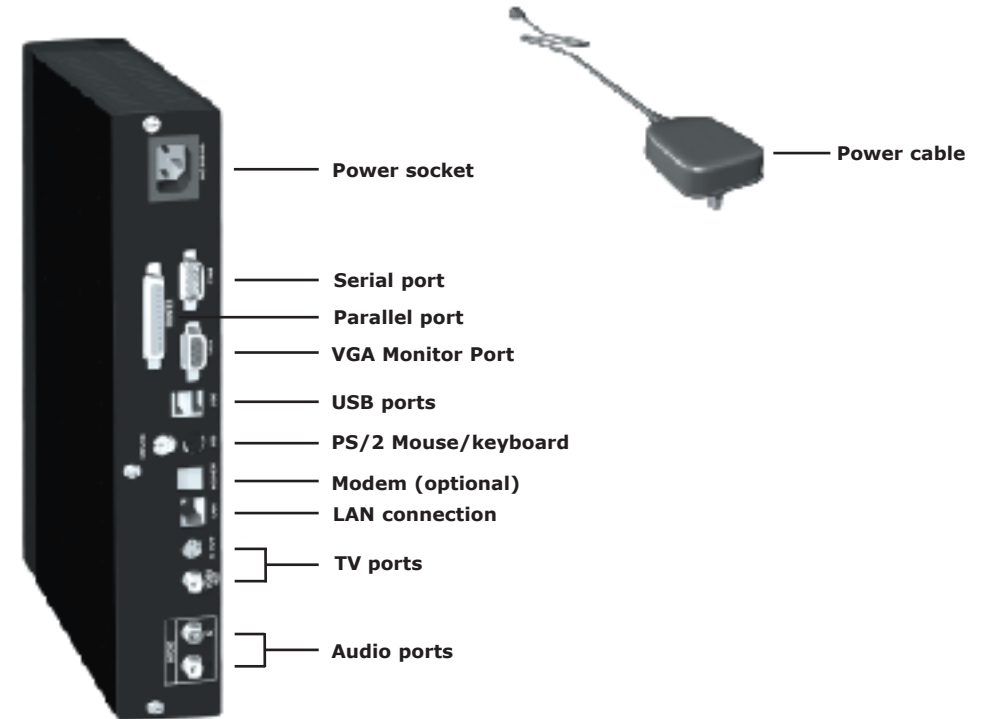
If air flow is restricted by blocking ventilation holes with other objects it may damage the CE-1010 and affect its performance.

Improper installation or maintenance of the CE-1010 will invalidate your warranty.



## Plugging in the CE-1010

The Netvoyager CE-1010 comes with a power cable, which is connected to the power socket in the unit's back panel and to the mains. The CE-1010 can be connected to Local Area Networks via its LAN connection socket also situated on its back panel. After connection, turn the CE-1010 on by pressing the button on the front panel, this will illuminate when there is power running to the unit. Do not connect the CE-1010 to the mains supply until you have properly connected all other leads.



## CE-1010 connectivity features

The Netvoyager CE-1010 offers a comprehensive array of input devices: these include ports for a PS/2, infra-red and USB mouse and keyboard; stereo audio ports; parallel and serial ports and a TV-out socket. Networking is provided by an auto-sensing 10/100 BaseT fast Ethernet. Display options are SVGA, S-Video and PAL composite video out.

If you need further information on connecting, configuring or warranty registration contact us at: [support@netvoyager.co.uk](mailto:support@netvoyager.co.uk)

## The connections page

The connections page consists of three controls:

- Connect
- End
- List View

The screenshot shows the Netvoyager session manager with two example connections, which are known as Northbridge and Southbridge.



The CE-1010 supports RDP and ICA connections, and the Southbridge connection is active and connected to the remote server in the example shown.

The Connect button performs multiple functions. If a connection is not active, then Connect activates the selected connection. If a connection is active, then Connect switches to the connection that is selected in the list view.

When the user clicks the End button, the Netvoyager session manager posts a session close warning message to the client.

If the connection is active after 10 seconds, then the client responds to the session close warning message and gives the user the opportunity to shut down the connection.

For example, in RDP, the remote Windows NT desktop comes to the foreground and prompts the user. Users will receive a message only if they are logged on.

If the session was waiting for a user to log on, then the session will exit quietly.

List View is the display area on the Connections and Configure pages. List View allows the user to view and select connections to connect to the Netvoyager session manager, switch to a new connection, or end a connection.

Users might select these options because they want to end the connection with the session manager or because the session software is no longer responding. The user can use List View to connect to the Netvoyager session manager, or to switch among connections, in the following ways:

Double-click the name of a connection in the Connection Name column to select and start a connection, or to switch to a different connection.

Highlight a connection, then press the Enter key to select and start a connection.

## The configure page

The configure page consists of five controls:

- Add
- Edit
- Delete
- Startup
- List View

The Add, Edit, and Delete buttons use helper applications. For example, in the case of the Add button, the application is called the Add helper. These applications present the user with dialogue boxes to select the type of connection to create, edit, or delete.

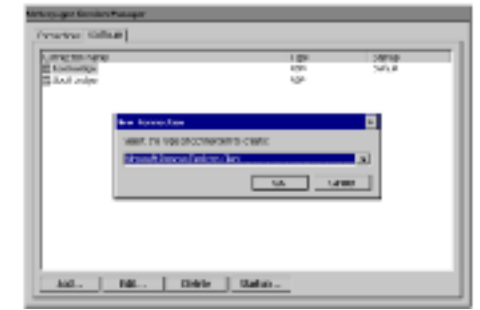
The Add button provides an example of how helpers function with the Netvoyager session manager buttons. Add allows the user to create a new connection. The screenshot on this page shows the effect of clicking Add. The user is presented with a dialogue box to select the type of connection to create.

After the user selects a connection type and clicks OK, the session manager will run the Add helper. Helper applications are not part of the session manager they are software components that are called by it.

When a helper is running, the session manager is disabled. The user must complete the tasks that are required by the helper and exit the helper application before continuing to use the shell.

The Edit button, which allows the user to edit or modify the properties of an existing connection, also uses a helper application. Clicking Edit starts the Edit helper for RDP or ICA connections.

The Delete button allows the user to delete a connection. The user is prompted whether to



delete the connection. If the user chooses yes, then the session manager calls the Delete helper.

The Delete helper must run silently. If it cannot delete the connection, then it notifies the user that an error occurred.

The Startup button allows the user to specify the startup behaviour of a connection. The startup behaviour of a connection can be either default or autostart.

If a connection is default, then it will be preselected in List View when the session manager starts, so that the user presses the enter button once to start the connection.

If the connection is autostart, then the session manager automatically starts the connection, instead of requiring the user to press enter. If a user does not select a default connection, then the first connection in the list is specified as the default.

List View allows the user to view and select connections to add, edit, delete, or specify the startup behaviour of a connection. For more information about List view, see The Connections Page opposite.

## Microsoft End User License agreement Page 1/2

· You have acquired a device ("DEVICE") that includes software licensed by Netvoyager (UK) Limited from Microsoft Licensing Inc. or its affiliates ("MS"). Those installed software products of MS origin, as well as associated media, printed materials, and "online" or electronic documentation ("SOFTWARE") are protected by international intellectual property laws and treaties. The SOFTWARE is licensed, not sold. All rights reserved.

· IF YOU DO NOT AGREE TO THIS END USER LICENSE AGREEMENT ("EULA"), DO NOT USE THE DEVICE OR COPY THE SOFTWARE. INSTEAD, PROMPTLY CONTACT NETVOYAGER (UK) LIMITED FOR INSTRUCTIONS OR RETURN THE UNUSED DEVICE(S) FOR REFUND. **ANY USE OF THIS SOFTWARE, INCLUDING BUT NOT LIMITED TO USE ON THE DEVICE, WILL CONSTITUTE YOUR AGREEMENT TO THIS EULA (OR RATIFICATION OF ANY PREVIOUS CONSENT).**

### GRANT OF SOFTWARE LICENCE.

This EULA grants you the following license:

· You may use the SOFTWARE only on the DEVICE.

· **NOT FAULT TOLERANT.** THE SOFTWARE IS NOT FAULT TOLERANT. NETVOYAGER (UK) LIMITED HAS INDEPENDENTLY DETERMINED HOW TO USE THE SOFTWARE IN THE DEVICE, AND MS HAS RELIED UPON NETVOYAGER (UK) LIMITED TO CONDUCT SUFFICIENT TESTING TO DETERMINE THAT THE SOFTWARE IS SUITABLE FOR SUCH USE.

· NO WARRANTIES FOR THE SOFTWARE. **THE SOFTWARE is provided "AS IS" and with all faults. THE ENTIRE RISK AS TO SATISFACTORY QUALITY, PERFORMANCE,**

**ACCURACY, AND EFFORT (INCLUDING LACK OF NEGLIGENCE) IS WITH YOU. ALSO, THERE IS NO WARRANTY AGAINST INTERFERENCE WITH YOUR ENJOYMENT OF THE SOFTWARE OR AGAINST INFRINGEMENT.** IF YOU HAVE RECEIVED ANY WARRANTIES REGARDING THE DEVICE OR THE SOFTWARE, THOSE WARRANTIES DO NOT ORIGINATE FROM, AND ARE NOT BINDING ON, MS.

· **Note on Java Support.** The SOFTWARE may contain support for programs written in Java. Java technology is not fault tolerant and is not designed, manufactured, or intended for use or resale as online control equipment in hazardous environments requiring fail-safe performance, such as in the operation of nuclear facilities, aircraft navigation or communication systems, air traffic control, direct life support machines, or weapons systems, in which the failure of Java technology could lead directly to death, personal injury, or severe physical or environmental damage. Sun Microsystems, Inc. has contractually obligated MS to make this disclaimer.

· No Liabilities for Certain Damages. **EXCEPT AS PROHIBITED BY LAW, MS SHALL HAVE NO LIABILITY FOR ANY INDIRECT, SPECIAL, CONSEQUENTIAL OR INCIDENTAL DAMAGES ARISING FROM OR IN CONNECTION WITH THE USE OR PERFORMANCE OF THE SOFTWARE. THIS LIMITATION SHALL APPLY EVEN IF ANY REMEDY FAILS OF ITS ESSENTIAL PURPOSE. IN NO EVENT SHALL MS BE LIABLE FOR ANY AMOUNT IN EXCESS OF U.S. TWO HUNDRED FIFTY DOLLARS (U.S.\$250.00).**

· **Limitations on Reverse Engineering, Decompilation, and Disassembly.** You may not reverse engineer, decompile or disassemble the SOFTWARE, except and only to the extent

## Microsoft EULA ctd page 2/2

that such activity is expressly permitted by applicable law notwithstanding this limitation.

· **SOFTWARE TRANSFER ALLOWED BUT WITH RESTRICTIONS.** You may permanently transfer rights under this EULA only as part of the permanent sale or transfer of the Device, and only if the recipient agrees to this EULA. If the SOFTWARE is an upgrade, any transfer must also include all prior versions of the SOFTWARE.

· **EXPORT RESTRICTIONS.** You acknowledge that SOFTWARE is of US-origin. You agree to comply with all applicable international and national laws that apply to the SOFTWARE, including the U.S. Export Administration Regulations, as well as end-user, end-use and country destination restrictions issued by U.S. and other governments. For additional information on exporting the SOFTWARE, see <http://www.microsoft.com/exporting/>.

## Netvoyager conditions of use

### Software Usage

You should read and understand all the terms and conditions in this user manual. The software is owned by Netvoyager or its licensors. Using this software indicates acceptance of all the terms and conditions contained within this user guide.

### Netvoyager PLC Software End User Licence conditions

#### Definitions

"Software" means the software applications, utilities and modules embedded within the Netvoyager CE-1010.

"Netvoyager CE-1010" refers to the device to which this documentation relates and which incorporates the software.

### Licence granted, conditions and restrictions

Netvoyager grants you a non-exclusive, world-wide (subject to export controls), royalty-free, non-transferable licence to use the software within the Netvoyager CE-1010 subject to all terms and conditions in this manual.

You may not use the software in conjunction with any other computer hardware other than the Netvoyager CE-1010; copy all or part of the software; incorporate all or any of the software into other programs developed by or on behalf of you and/or used by you; reverse engineer, decompile or disassemble the computer

hardware or software in the Netvoyager CE-1010; rent, lease, gift, loan, sell, distribute or transfer possession of the software in whole or in part.

### Termination

This licence is effective until terminated. You may terminate the licence by destroying the software and all copies thereof. This licence will terminate automatically without notice if you fail to comply with any of its provisions. Upon termination you must destroy the software and all copies thereof or return the CE-1010 device.

### Disclaimer

In no circumstances will Netvoyager be liable for any direct, indirect, consequential or incidental damage, including loss of profits, business interruption and loss of data arising out of the use or the inability to use the software or hardware however caused, save to the extent that such liability is not capable of exclusion at law. These limitations of liability apply even if Netvoyager or a third party reseller have been advised of the possibility of such damage occurring.

This end user licence will be governed by the laws of England. The above terms and conditions supersede any prior agreement oral or written between you and Netvoyager relating to software.